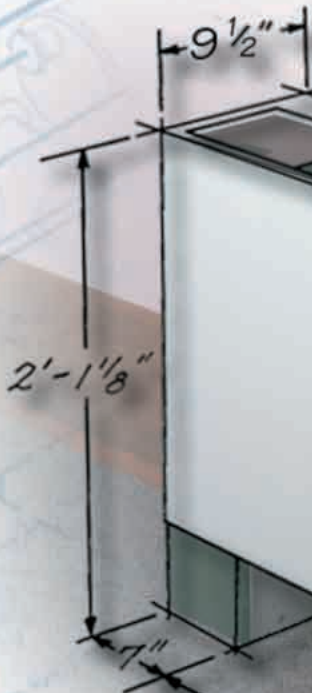




**TRANE®**

# The UniTrane® Fan-Coil



*smart design...*

*smart system...*

*smart choice.*



## Smart UniTrane® design enhances indoor air quality!

Indoor air quality (IAQ) is a growing concern for building owners and operators. Poor IAQ may expose building tenants to airborne viruses, toxins, and pollutants that threaten their health. Trane recognizes the importance of minimizing such risks. That's why our fan-coil units comply fully with ASHRAE Standard 62-1989. It's also why the UniTrane design makes many IAQ-related features standard...Smart features like easy filter removal, sloped drain pans, cleanable interior surfaces, and fresh air dampers that can help keep your tenants comfortable and healthy – and let you breathe a little easier.

### Easy-to-change filters

One element of good indoor air quality is filtered room air. Ask any building manager, hard-to-change filters simply won't be replaced as often as necessary. The filter system in UniTrane

fan-coils combines a snug-fitting filter with ready access so that changeouts are fast and easy.

### Drain pans that *really* drain

Removing moisture from drain pans is another simple-yet-critical element of good IAQ. Without adequate drainage, water will accumulate and may become contaminated with the spores inevitable in most indoor environments.

To eliminate standing water and combat microbial growth, the drain pan in each UniTrane fan-coil is constructed of a rugged, non-corrosive material and designed with a positive slope that promotes fast, complete condensate removal.



### Easy access for cleanability

Accessibility and cleanability go hand-in-hand. Together, they contribute to good IAQ by eliminating opportunities for dirt accumulation and microbial growth. With that in mind, we designed the UniTrane fan-coil unit with easy access to the coil and fan and removable drain

fans. What about the cabinet's interior surfaces? No problem. They're lined with an impermeable, closed-cell insulation that's fully cleanable – and eliminates the risk of fiberglass entering the airstream.

### Ventilation to ensure clean air

Proper ventilation is key to good indoor air quality, too. That's why we offer several fresh-air damper options with UniTrane fan-coils, including an "auto-economizer." When conditions are right, the damper does more than ventilate the room...it introduces enough fresh air for comfort cooling and, in turn, saves energy and operating expense.

IAQ is a complex issue, but the UniTrane fan-coil's smart design makes it manageable. Who would've known that *just a fan and a coil* could contribute so much to a healthy indoor environment? The Trane Company. For more information on IAQ, ask your local Trane representative for *A Guide to Understanding ASHRAE Standard 62-1989 (IAQ-TS-1)*.



# School, hospital, office, or hotel...

## UniTrane® fan-coils are the smart choice

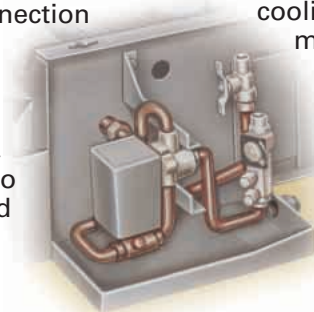
Whether you're building a new facility or renovating an existing one, a UniTrane fan-coil system can satisfy the distinct interests of everyone on your design team, from aesthetics to life-cycle costs, from tenant comfort to serviceability. Here's how...

### Application flexibility

- Horizontal and vertical models for cabinet, concealed, and recessed applications
- Decorator colors to complement any building interior
- Chilled-water, hot-water, steam, and electric heating options
- Standalone and automated operation

### Easy installation

- Factory-installed piping packages in a wide variety of options – including control valves, unions, strainers, and end valves – and an auxiliary drain pan to collect condensate, making field insulation unnecessary
- Single-point power connection with factory-installed transformer to reduce jobsite labor
- Factory-installed/tested, unit-mounted controls to minimize field setup and assure reliability



### Simple operation, intelligent control

- Automatic changeover between cooling and heating modes
- Free-cooling economizers and modulating valves to maximize system efficiency

- Integrated Comfort™ system compatibility for central monitoring and control, and energy-saving strategies such as warm-up/cool-down periods, occupied/unoccupied setpoints, and random start-up

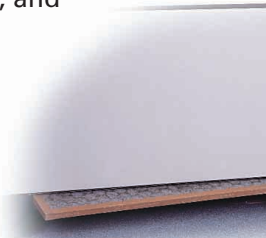




Table PD-13 — High Static Motor, Four-Pipe, Group 2

FC	Coil	Cooling		Heating		WFO (WPA)	TMSH (TMSW)	QHTD	SFA (L/W)
		GPM	(L/W)	GPM	(L/W)				
2	2C1H	250 (123)	5.6 (1.0)	4.8 (1.3)	8.0 (2.0)	10.8 (5.7)	35	0.67 (0.24)	1.35 (0.07)
	2C2H	250 (118)	5.4 (1.8)	4.2 (1.2)	7.6 (2.2)	10.4 (5.2)	36	0.53 (0.06)	1.3 (0.3)
	3C1H	250 (118)	7.8 (2.3)	5.5 (1.8)	1.65 (0.10)	20.6 (6.7)	69	0.84 (0.09)	1.6 (1.3)
3	2C1H	370 (151)	6.9 (2.0)	6.3 (1.5)	11.9 (3.6)	14.5 (6.3)	31	1.30 (0.08)	3.5 (1.1)
	2C2H	300 (142)	6.7 (2.0)	5.0 (1.5)	10.8 (3.1)	13.8 (5.8)	31	1.04 (0.12)	3.6 (1.0)
	3C1H	300 (142)	9.8 (2.9)	8.2 (2.4)	1.48 (0.09)	14.4 (0.09)	61	1.43 (0.09)	1.6 (1.3)
4	2C1H	460 (217)	9.3 (2.7)	8.1 (1.8)	17.3 (5.1)	21.5 (8.3)	16	1.59 (0.07)	3.5 (1.1)
	2C2H	430 (203)	16.5 (4.8)	15.0 (4.7)	2.07 (0.13)	27.8 (7.2)	27	1.84 (0.12)	1.5 (0.4)
	3C1H	430 (203)	13.1 (3.8)	12.8 (3.8)	3.41 (0.22)	35.2 (10.2)	36	1.35 (0.07)	1.5 (0.4)
6	2C1H	740 (349)	16.0 (4.7)	14.5 (4.3)	3.76 (0.24)	45.5 (15.3)	48	1.92 (0.22)	4.9 (1.7)
	2C2H	690 (326)	18.7 (5.5)	14.0 (4.1)	4.68 (0.31)	54.0 (18.4)	48	3.12 (0.30)	1.5 (0.4)
	3C1H	690 (326)	17.1 (5.0)	15.9 (4.9)	5.24 (0.33)	67.6 (20.3)	48	1.64 (0.12)	1.5 (0.4)

### Serviceable design

- Easy filter removal to encourage regular replacement
- Removable drain pans that wipe clean with a damp cloth
- Quick-disconnect fan motors for easy removal and service

For more information about UniTrane fan-coil systems and what makes them a smart HVAC choice, contact your local Trane representative.

# One smart system...

## UniTrane® Fan-Coils plus Tracer® Building Automation Controls equal one smart system

Underlying every UniTrane unit with an Integrated Comfort™ system (ICS) is Trane's unrivaled knowledge of HVAC systems and our unique application of that knowledge. We not only design the HVAC equipment, we engineer the unit controllers, building automation system, and application software, too. The result? Thoughtful system optimization. Comfort that's reliable and economical. A system that's sophisticated, yet simple to operate... one that's easy to own because **one** supplier manufactures, installs, warrants, and services every component. Just one. Trane.

### Factory commissioning

Nobody likes surprises on the jobsite. That's why factory commissioning is key to ICS. Our building automation specialists design the communication link, operate the equipment once it's installed, then verify the entire system's performance – in

detail. Factory commissioning means less field labor, lower start-up costs, faster installation, trouble-free start-up, and accurate operation from day one. It also means less waiting before occupancy.

### Central control

ICS makes managing your facility a lot easier. Direct digital controllers (DDC) on the fan-coils and a Tracer building automation system give you system-wide monitoring, control, and diagnostic capabilities from a single location. Use the PC workstation's easy-to-learn interface to adjust setpoints, open or close valves and dampers, and turn individual units on or off. Add a modem to oversee the system's operation from a remote location or to automatically notify your service company of alarms.

### Optimized efficiency, system-wide

The comfort system represents a large part of a building's energy diet. Automated control

strategies like time-of-day scheduling, demand limiting, equipment sequencing, and coordinated control of HVAC equipment and lighting let you control energy use without compromising comfort.

### Comprehensive information

Everything you need to know about your Tracer/UniTrane system is as close as your PC. Operating data from all system components is readily available for evaluation. Reports document useful information about system performance, air quality, energy consumption, and equipment operating trends. In-depth diagnostics combined with preprogrammed reminders and instructions simplify preventive maintenance and troubleshooting, ultimately reducing equipment downtime.

Commissioning, control, efficiency, and information...it simply all adds up to **one...** UniTrane units with ICS. **One** smart system from **one** supplier...not just one smart design...but one smart choice. Let Trane be the **one** for you!





## Smart design... smart system... smart choice...

### The UniTrane® fan-coil unit

Fan-coil units aren't new. But Trane took this simple design, just a fan and a coil, and made it better. UniTrane fan-coil units are room conditioners that operate quietly, provide total comfort control, and can help you lower costs while keeping your tenants happy.

### Cuts start-up costs

Unit installation is fast and easy. Trane factory-installs complete piping packages and advanced, low-voltage controls. This significantly reduces field labor, eliminates costly electrical requirements, and assures a trouble-free system start-up.

### Lowers operating costs

UniTrane fan-coil controls make operation easy and cost-effective. The controls at each unit determine whether heating or cooling is needed, then switch to the right operating mode-automatically. Adding a Tracer® building-level controller transforms the easy-to-link UniTrane controls into a Trane Integrated Comfort™ system (ICS). The ICS approach lets you control all of your fan-coil units from a single location and provides detailed reports to help you manage operating costs.



### Keeps tenants happy

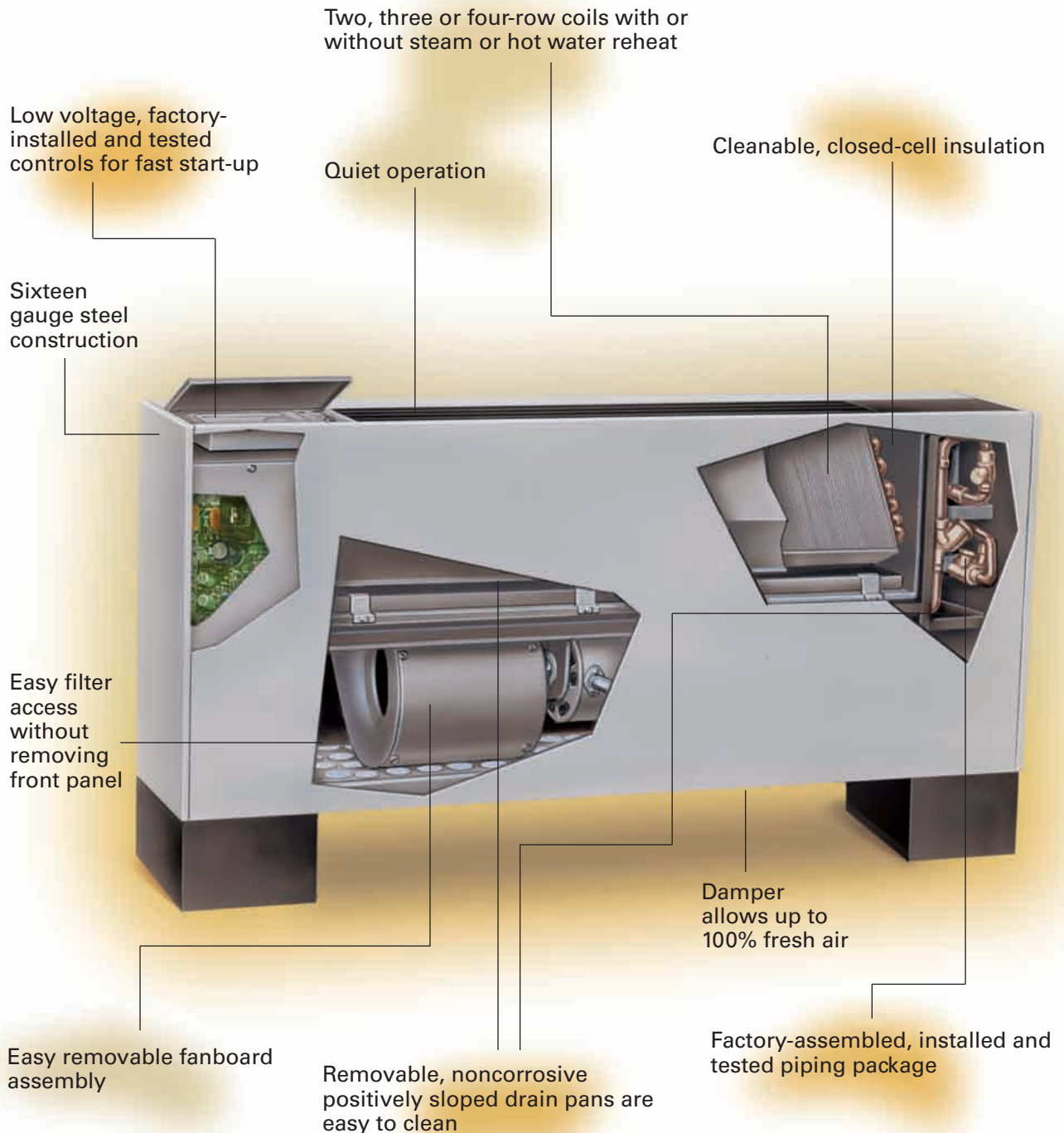
Good indoor air quality (IAQ) is as vital to occupant comfort as an HVAC system that works properly. Poor IAQ can reduce productivity, increase absenteeism...even cause serious illness. As if that weren't enough, improperly controlling the relative humidity inside your building increases the likelihood of mold and fungal growth, which in turn can cause musty odors and costly damage to furnishings and the building structure.

The IAQ-conscious design of UniTrane fan-coils helps control contaminants at their source. The result? Healthy, comfortable rooms...satisfied tenants...content owners and operators.

Contact your local Trane representative today to learn why UniTrane fan-coil units are the **smart choice** for your building.

*For Reference Only:  
The schematic shows typical wiring  
for a basis of design or  
field. For an as-built  
see the shop  
local*

# ...it isn't just a fan and a coil!



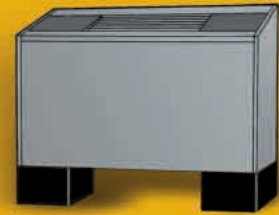
# UniTrane® Fan-coil Units are available in these models



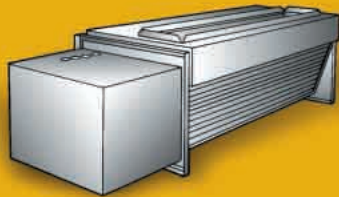
vertical concealed



vertical cabinet



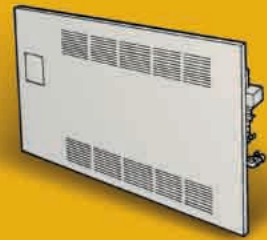
vertical cabinet slope top



low vertical concealed



low vertical cabinet



vertical recessed



horizontal cabinet



horizontal concealed



horizontal recessed



**TRANE®**

Worldwide Applied Systems Group  
The Trane Company  
3600 Pammel Creek Road  
La Crosse, WI 54601-7599

[www.trane.com](http://www.trane.com)

An American Standard Company

UNT S-12

December 1998

New

La Crosse WI U.S.A.

Since The Trane Company has a policy of continuous product improvement, it reserves the right to change design and specification without notice.